



## **NPR Labs Baseline IDer v1.0**

### *Getting Started Guide*

#### *Introduction*

The NPR Labs Baseline IDer (referred to hereafter as the application, tool, program, or utility) is a tool to provide station ID audio and PAD/PSD information for HD Radio channels on an hourly basis. It is designed to use TCP or UDP to be used with Importers running Versions 1.1.2 and 2.0.1 and higher of the iBiquity Importer software. It can also be used with a main program service with Exporters running version 2.3.3 of iBiquity's Exporter software. It communicates PAD via NPR Labs' PAD\_Processor\_CLI.

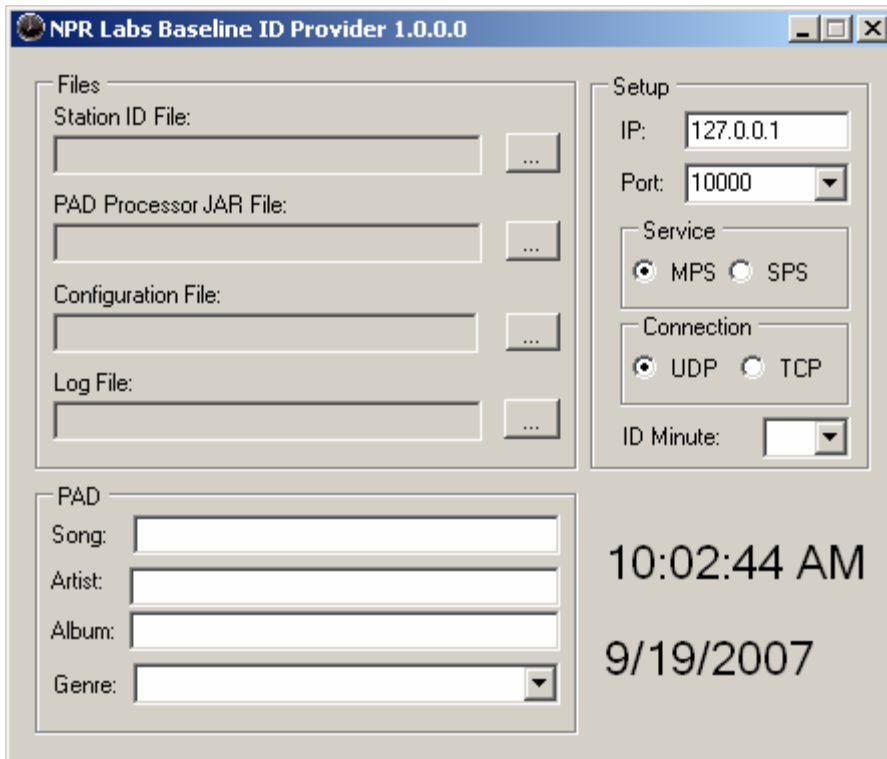
#### *Prerequisites*

To use the utility, you must have the following:

- The Java Runtime Environment Version 1.5 or higher installed
- The Microsoft .Net Framework 2.0 or higher installed
- Microsoft Windows Media Player 10 or Higher installed (11 preferred)
- An audio ID in a format usable by Windows Media Player
- Network access to the Importer for SPS or Exciter for MPS
- A copy of NPR lab's PAD\_Processor\_CLI.

#### *Operation*

The program can be run on the Importer itself or on a separate computer with network and audio cable access to the Importer or Exporter. To run it, double click on the Baseline IDer.exe file. You will be presented with the following screen:



In the IP field of the Setup box, enter the IP address of the Importer (or Exporter if using on your HD-1 channel.) If running the program on the Importer itself for a SPS, use the IP 127.0.0.1. In Port, enter the UDP port used by your MPS or SPS PAD. For MPS, this number will be 10000. For SPS, check the setting inside the iBiquity SPS Client's settings. 10010 is typical for an HD-2 channel.

In the two radio buttons in the Service box, select if you are displaying this information on the main program service (MPS) or a supplementary program service (SPS).

Below that, select UDP if using version 2.x of the Importer software or connecting to an Exporter. Use TCP for Importers running version 1.1.2.

To choose an audio ID, click the top ... button in the Files section. An open file dialog will appear. Browse to and select a WAV, WMA, or MP3 audio station ID file, and click Open.

The PAD Processor JAR File must be specified. To do so, click on the second ... button. An open file dialog will appear. Browse to and select the PAD\_Processor\_CLI.jar file, and click Open.

The Configuration File must also be specified. To do so, click on the third ... button. A save file dialog will appear. Choose a location for the configuration file to be stored, and click save.

Optionally, a log file may be specified. To do so, click on the bottom ... button. A save file dialog will appear. Choose a location for the log file to be stored, and click save. Leaving this blank will disable logging.

Next, set up the Station ID PAD message. To do this, fill in the text fields located in the PAD section of the program. Note that not all fields are shown on all receivers, though song title and artist usually are.

Finally, in the setup window, select which minute of the hour the ID should air.

The station ID selected will play every hour during the minute selected. You may see a quick flash of black on the screen for less than a second as the PAD\_Processor\_CLI is used to update PAD data on the Importer/Exporter. This is normal.

If you have any questions about this tool, please contact Matt Burrough at [mburrough@npr.org](mailto:mburrough@npr.org) or 202.513.2463. NPR Labs does not guarantee a response to questions.