



NPR Labs Automation v1.30

Getting Started Guide

Introduction

The NPR Labs Automation (also known as MPS Automation or XNPR Automation and referred to hereafter as the application, tool, program, or utility) is a tool to provide audio and PAD/PSD information for HD Radio channels. It is designed to use TCP or UDP and to be used with Importers running Versions 1.1.2 and 2.0.1 and higher of the iBiquity Importer software. It can also be used with a main program service with Exporters running version 2.3.3 of iBiquity's Exporter software. It communicates PAD via NPR Labs' PAD_Processor_CLI. Finally, it can record playback history to Last.FM using QTScrobber.

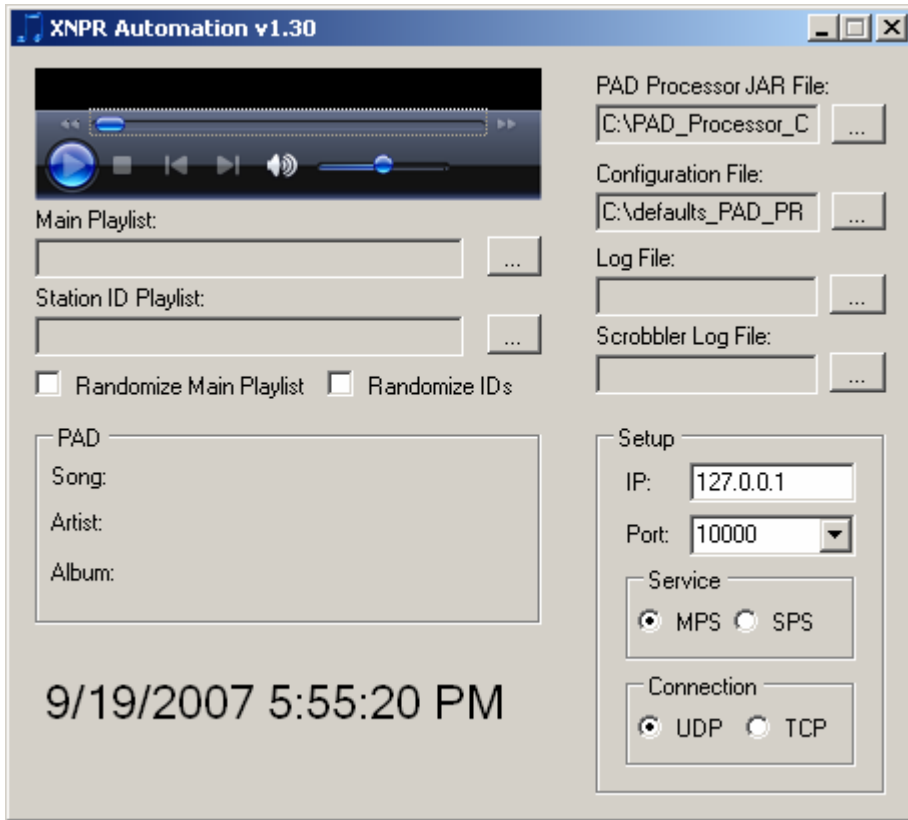
Prerequisites

To use the utility, you must have the following:

- The Java Runtime Environment Version 1.5 or higher installed
- The Microsoft .Net Framework 2.0 or higher installed
- Microsoft Windows Media Player 10 or Higher installed (11 preferred)
- Windows Media Playlist Files (*.wpl) for station IDs and audio content
- Audio content in a format usable by Windows Media Player and with metadata entered in the Windows Media Player Library
- Network access to the Importer for SPS or Exciter for MPS
- A copy of NPR lab's PAD_Processor_CLI.
- (Optional) A copy of QTScrobber and an AudioScrobber/Last.FM account

Operation

The program can be run on the Importer itself or on a separate computer with network and audio cable access to the Importer or Exporter. To run it, double click on the MPSAutomation.exe file. You will be presented with the following screen:



In the IP field, enter the IP address of the Importer (or Exporter if using on your HD-1 channel.) If running the program on the Importer itself for a SPS, use the IP 127.0.0.1. In Port, enter the UDP port used by your MPS or SPS PAD. For MPS, this number will be 10000. For SPS, check the setting inside the iBiquity SPS Client's settings. 10010 is typical for an HD-2 channel.

In the two radio buttons in the Service box, select if you are displaying this information on the main program service (MPS) or a supplementary program service (SPS).

Below that, select UDP if using version 2.x of the Importer software or connecting to an Exporter. Use TCP for Importers running version 1.1.2.

The PAD Processor JAR File must be specified. To do so, click on the uppermost ... button. An open file dialog will appear. Browse to and select the PAD_Processor_CLI.jar file, and click Open.

The Configuration File must also be specified. To do so, click on the second ... button. A save file dialog will appear. Choose a location for the configuration file to be stored, and click save.

Optionally, a log file may be specified. To do so, click on the third ... button. A save file dialog will appear. Choose a location for the log file to be stored, and click save. Leaving this blank will disable logging.

Optionally, an audioScrobbler log file may be specified. To do so, click on the bottom ... button. A save file dialog will appear. Choose a location for the log file to be stored, and click save. Leaving this blank will disable audioScrobbler logging.

Next, click the ... button for the main playlist and select the playlist file with your main audio content. Do the same for the ... button below, selecting the playlist containing station IDs. If desired, check the randomize check boxes below that. If it is not already playing, click the play button in the media box above the playlist selections. If WMP11 is installed, the button will be round, blue, and have the triangle play symbol inside.

Currently playing PAD information should appear in the PAD box just above the date/time.

One station ID from the station ID playlist will air between 55 after and 5 minutes after the hour. It will play after the first song ends in that time period. If a song longer than 10 minutes is playing and the clock gets to 5 minutes after without an ID, the song will be paused, an ID will play, and the song will resume. Volume levels for IDs and songs are automatically faded up and down so there isn't a sudden loud burst of audio.

You may see a quick flash of black on the screen for less than a second as the PAD_Processor_CLI is used to update PAD data on the Importer/Exporter. This is normal.

If you have any questions about this tool, please contact Matt Burrough at mburrough@npr.org or 202.513.2463. NPR Labs does not guarantee a response to questions.